



VC520 **PRO**

Enterprise grade PTZ camera perfect for mid to large conference rooms



SmartFrame

Automatically frame people based on facial recognition and optimize color and light for human faces.



Daisy-chain speakerphone

Effectively capture audio throughout the entire room with the VC520 PRO's full-duplex speakerphone. No more crowding around one speakerphone, now you can daisy-chain an additional speakerphone which can cover up to a 30ft diameter. The VC520 PRO's touch controls allow easy muting and volume control for the perfect audio experience while using echo cancellation.



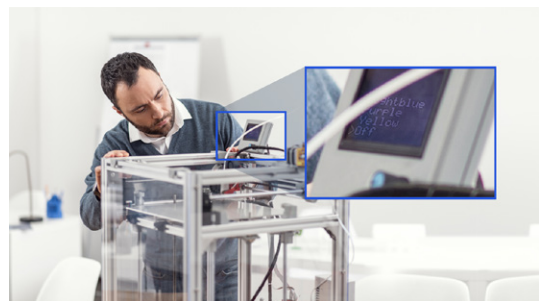
IP based management and streaming

Ethernet network connectivity to manage and control the VC520 PRO via a web browser or centralized management software. Easily connect live video content from the VC520 PRO using an H.264 RTSP/RTMP stream to your cloud base or on premise streaming delivery network.



18X total zoom (12X optical zoom with PTZ)

The VC520 PRO offers superior auto-focus optics with 12X true optical zoom which delivers seamless pan, tilt, and zoom performance with the ability to capture the smallest details with absolute clarity at every focal length, making it one of the fastest and smoothest 18X total zoom cameras available on the market today.



10 camera presets

The VC520 PRO allows you to customize your meetings by storing up to 10 PTZ presets. Each preset can be easily accessed with one touch of the remote, saving you time and providing flexibility to swiftly move to predetermined locations in the conference room. Over 100 presets with RS232 integration and VISCA control.



Specifications

Camera

- Sony super low light 2M pixel sensor, keep clear and natural image in low light conditions
- Resolution: (16:9) 1920x1080, 1600x900, 1280x720, 960x540, 848x480, 800x448, 640x360, 424x240, 320x180; (4:3) 800x600, 640x480, 480x360, 320x240 at 60, 30, 15fps
- SmartFrame for automatic FOV adjustment to fit all participants
- True WDR up to 120db: Superb backlight compensation technology for optimizing light balance in high-contrast conditions
- Zoom: 18X total zoom (12X optical zoom)
- Wide field of view (DFOV): 82°
- Lens focal length: 3.9mm (wide) ~ 47.3mm (tele)
- Lens F#: 1.8 (wide) ~ 2.8 (tele)
- Mirror, Flip, AE, white balance: auto, manual override via PTZApp
- Minimum focus distance: 1.5m
- Standard tripod screw holes and Kensington slot

Motorized pan and tilt movement

- Pan: ±160°
- Tilt: +90° (up) -30° (down)
- 10 camera presets (through remote control)
- Fast and quiet pan & tilt movement

Video format

- YUV, MJPEG, H.264
- Network video compress format: H.264
- Network protocol: RTSP, RTMP

Connectivity

- 12V/5A power adaptor
- Mini DIN9 for RS232 in & out connection (VISCA control panel and camera daisy-chain)
- USB3.1 Type-B connector
- IP (RJ45)

Speakerphone

- Full-duplex microphone array speakerphone, with echo cancellation
- Advanced noise suppression
- 2 microphone array
- 3.5mm phone in jack
- 3.5mm line out
- Speaker volume: Adjustable to 90dB SPL at 0.5M
- Touch controls for volume down, up, mute, phone input, call, and hang-up
- Can bridge phone-in and USB into one call
- Security: Kensington slot

Audio format

- AAC-LC
- Network protocol: RTSP, RTMP

LAN

- 10/100/1000 Mbps

USB

- 3.1 Gen1 Type-B, backward compatible with USB 2.0
- UVC (USB video class) 1.1
- UAC (USB audio class) 1.0

Control

- IR remote control
- VISCA/pelco P/pelco D via RS232 (128 preset points via VISCA command)
- Remote side: VISCA over IP, IP (RJ45)
- UVC/UAC plug and play
- WebUI: Browser IP access via Chrome (Not support IE)
- PTZApp

Mount

- Camera wall-mount bracket included

System requirements

- Windows® 7/8.1/10
- Mac OS X 10.13 or higher
- Google Chromebook version 76.0.3809.102
- Android 6 or higher

Hardware spec

- 3.2 GHz Intel® Core™ i5-4460 Processor or higher
- 4GB RAM or more
- USB 3.1 port, backward compatible with USB2.0 port

Power supply

- AC 100V ~ 240V, 50/60Hz
- Consumption: 12V, 2A

Free applications for meeting collaboration (Windows® and MAC)

EZManager : Camera central management software

- Remotely manage group FW/SW updates, camera control, and settings

PTZApp

- Upgrade firmware automatically or manually
- Control camera
- Set parameters and adjust camera image
- Diagnose operating status
- View live video

EZLive

- Real-time streaming/annotating/snapshots/video recording

Environmental data

- Operation temperature: 0 ~ 40°C
- Operation humidity: 20% ~ 80%
- Storage temperature: -20 ~ 60°C
- Storage humidity: 20% ~ 80%

Package contents

- VC520 PRO camera
- VC520 PRO speakerphone
- Remote control
- Power adapter
- Power cord (6 ft/1.8m)
- USB 3.1 type-B to type-A cable (10ft/3m)
- CAT6 speakerphone cable (33ft/10m)
- 3.5mm aux cable (3ft/0.9m)
- Quick-start guide
- Warranty card
- Wall-mount bracket
- ¼" tripod screw

Optional accessories

- Mini DIN9 to RS232 adapter
- Expansion speakerphone
- Expansion microphone

Warranty

- Camera: 3 years
- Accessories: 1 year

Compatible applications

- ZOOM, Microsoft® Teams, Skype™ for Business, Skype™, Google Hangouts, Intel® Unite™, RingCentral, BlueJeans, V-Cube, LiveOn, CyberLink U Meeting®, TrueConf, Adobe Connect, Cisco WebEx®, Fuze, GoToMeeting™, Microsoft® Lync™, Vido, vMix, WebRTC, Wirecast, XSplit



AVer Information Inc. Americas averusa.com
668 Mission Court, Fremont, CA 94539
T 408.263.3828 F 408.263.8132 toll free 1.877.528.7824
©Copyright 2019, AVer Information Inc. All rights reserved.
Specifications subject to change without notice.

f @AVerUSA

@AVerVC

Distributor/Dealer