

The **CONNECTSERIES** is a 1U X 19" rack mountable smart amplifier for use in professional AV integration projects.

It is made to mount directly into a standard AV rack, right out of the box. Additionally, you can rotate the rack ears 90 degrees either direction to mount the amplifier to walls, tables, and other surfaces.

Ensure your AC power source delivers 100-240VAC +/- 15% 50/60Hz before installing.

For full product details and specs, download the manual at the URL below or scan the QR code.



[www.leaprofessional.com/downloads](http://www.leaprofessional.com/downloads)

### In The Box

	<b>2-Position Amphenol Anytek Output Connector</b> Qty 1 per Output Channel LEA Part #: CPP10006-1 80/160W Only*		<b>8-Pin I/O Input Connector</b> Qty 1 LEA Part #: CSP10004-1 350/700/1500W Only*
	<b>2-Position Amphenol Anytek Output Connector</b> Qty 1 per Output Channel LEA Part #: CPP10001-1 350/700/1500W Only*		<b>12-Pin I/O Input Connector</b> Qty 1 LEA Part #: CSP10005-1 80/160W Only*
	<b>3-Position Amphenol Anytek Input Connector</b> Qty 1 per Input Channel LEA Part #: CSP10001-1		<b>Standard IEC Power Cord</b> Qty 1 LEA Part#: MOS10013-1 80/160/350/700W Only*
			<b>32A Neutrik Powercon to L6-30p Power Cord</b> Qty 1 LEA Part#: MCC10057-1 1500W Only*

### Front Panel Overview

#### Shark Fin LED



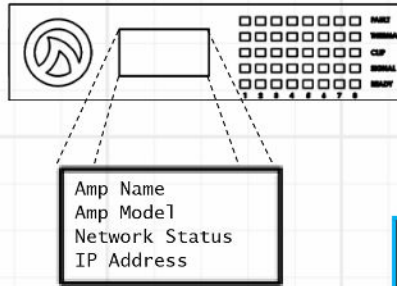
**Green Fin**  
AC plugged in  
Unit powered off



**Blue Fin**  
AC plugged in  
Unit powered on



#### LCD Display



#### Training Videos



For more information on amplifier indicator states or troubleshooting, scan the QR code above to access our product training videos or email our technical support team at:

[techsupport@leaprofessional.com](mailto:techsupport@leaprofessional.com)

#### Channel Status Indicators

- Channel Fault** – If fault LEDs are illuminated red, channel has shut down due to protected circuits.
- Channel Thermal** – If thermal LEDs are illuminated red, channel is at or close to over temp.
- Channel Clip** – A red LED indicates a clipping signal, an amber LED indicates channel is limiting.
- Signal Presence** – Green LED indicates -40dB of signal is present on that channel.
- Channel Ready** – Channel is ready to pass audio.

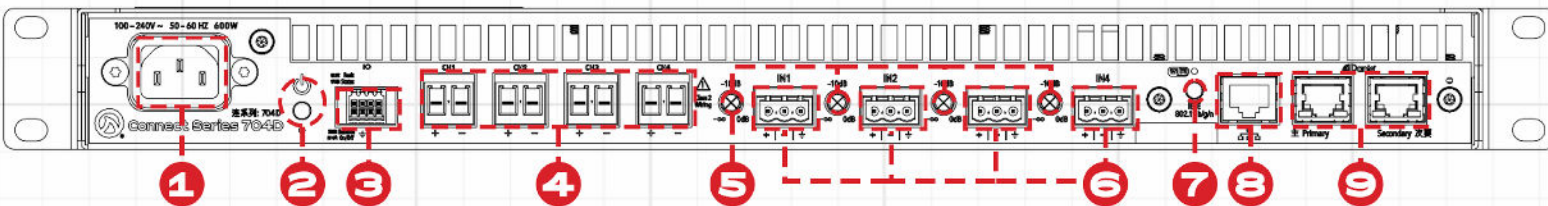
### Back Panel Overview

For model-specific views and back panel explanations, scan the QR code to the right to view and download the user's manual.

#### Manual



- |   |  |  |  |
|---|--|--|--|
| <b>1. IEC Type Inlet</b><br>For detachable IEC connector<br>100VAC-240VAC 50/60Hz                           | <b>2. Power Button</b><br>ON/OFF button – status indicated by LED below.<br>(Green = AC, Blue = On)        | <b>3. External I/O Port</b><br>With remote ON/OFF & Fault Status                             | <b>4. Channel Outputs</b><br>2-position output receptacles for up to 8 channels (depending on model) |
| <b>5. Channel Attenuators</b><br>Attenuation pots for output level on each channel (not on 80W/160W models) | <b>6. Analog Balanced Inputs</b><br>3-position input receptacles for up to 8 channels (depending on model) | <b>7. Wi-Fi Access Point</b><br>Enable/Disable button with status LED (AP=Blue, Wi-Fi=Green) | <b>8. FAST 10/100MB Ethernet</b><br>Cat5 or Cat6 input for control, monitoring, & POE                |
|   |  |  | <b>9. Dante Inputs</b><br>Primary & Secondary (Dante models only)                                    |



## External I/O Port



### Fault Status

Analog connection for quick amp fault status. Delivers 5V signal.

5V ON = no faults

5V OFF = fault present

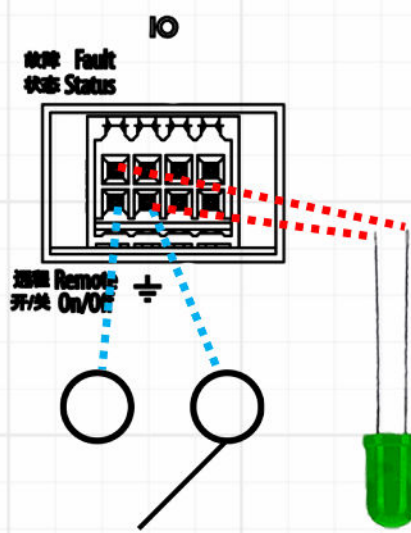


### Remote ON/OFF

This is wired directly to a switch or external contact closure for quick ON/OFF control of the amplifier.

OPEN = amp on

CLOSED = amp off



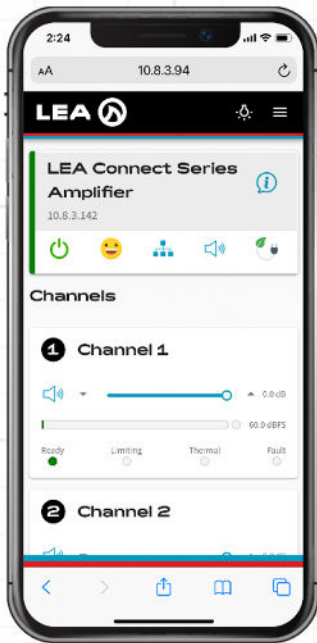
## Smart Power Bridge

Smart Power Bridge gives you the benefits of a bridged output channel without sacrificing an amp channel.

You can Smart Power Bridge any one channel of an LEA Connect Series amplifier. For example, on a Connect Series 4 channel product, you can put channel 1 in Smart Power Bridge mode and get double the power output on that channel, channel 2 in 70V or 100V mode and have channel 3 and 4 in Low-Z mode.

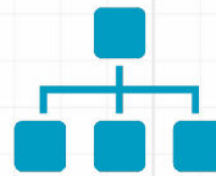
## Connecting to the Network

There are three ways to choose from when connecting to a network. Scan the QR code for a detailed video walkthrough.



### Access Point Mode

1. Press Wi-Fi button on back of amp
2. The amp creates its own Access Point (LED above button turns blue) – find and connect to it on your device (Phone, tablet, PC)
3. Enter the amp's IP address into any web browser on your device (Phone, tablet, PC)



### Wired Mode (Ethernet)

1. Connect to the wired network using Cat5 or Cat 6
2. Connect your device (Phone, tablet, PC) to the same network
3. Enter the amp's IP address into any web browser on your device (Phone, tablet, PC)



### Wi-Fi Mode

1. Follow the steps in the AP or Wired instruction to the left
2. In "Network Settings", check the "Wi-Fi Enabled" box
3. Enter your Wi-Fi SSID & Password & click "Save"
4. From Wired mode, no action needed. From AP mode, press Wi-Fi button on back of amp
5. Connect your device to the same network, enter the amp's IP address in the web browser

### Networking Training Video



## Connecting to the Cloud

1. For remote control, visit: [www.leaprofessional.cloud](http://www.leaprofessional.cloud)
2. Select "Register New Account" to create a Username & Password
3. Follow the prompts to log in to your Cloud Account
4. For more details, scan the QR code



## Accessories



**RCAF-2**  
Female RCA to Amphenol Anytek 3-pin Connector  
Qty 2 per order



**XLRF**  
Female XLR to Amphenol Anytek 3-pin Connector  
Qty 1 per order



**MCC10061-1**  
32A Neutrik Powercon to L5-30P, 125V, 30A U.S. Power Cord for LEA Connect Series 1504 & 1504D.  
Qty 1 Per Order



**Rear Rack Support Bracket**  
80/160/350/700W Model LEA Part# - MFM10003-1  
1500W Model LEA Part# - MFM10019-1  
Qty 2 per order

### Accessories Spec



## Get More

For more information, training videos, product spec, downloads, and contact details, visit our website or scan the QR codes to the right.

[www.leaprofessional.com](http://www.leaprofessional.com)

### Manual



### Latest Firmware



### Training Videos



### Product Registration



### Website

